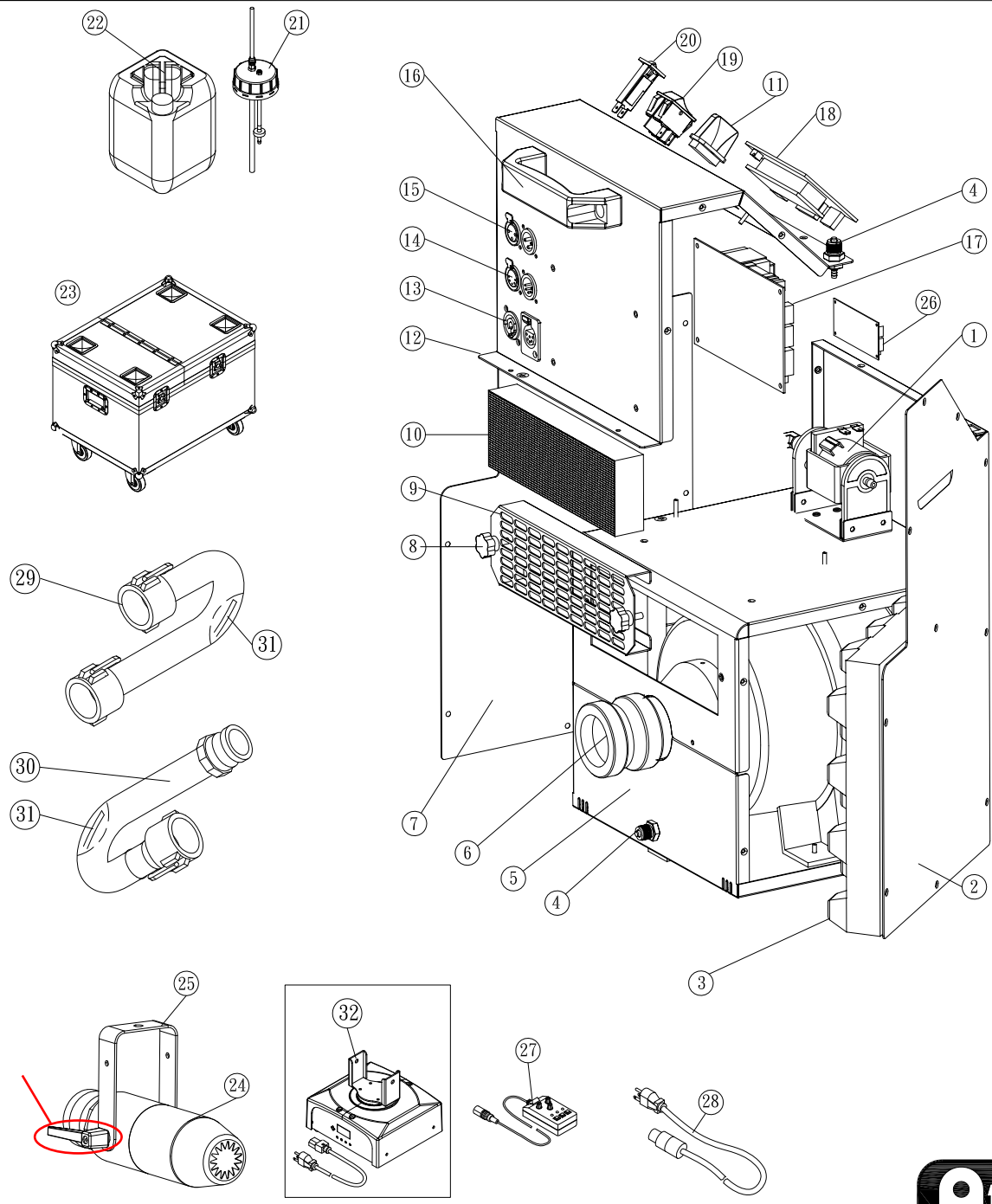


A  
B  
C  
D  
E



- |                          |                                     |
|--------------------------|-------------------------------------|
| ① S-500-P(PA0EX5E1B)     | Pump (Group)                        |
| ② S50000301              | Steel Case/Left Cover               |
| ③ C03S50011              | Cotton insulation                   |
| ④ C00013511              | Fluid Tubing Connector              |
| ⑤ S50000101              | Steel Case/Base                     |
| ⑥ S-500-M(MB2A05801)     | Air Blower                          |
| ⑦ S50000400              | Steel Case/Right Cover              |
| ⑧ C01015001              | Screw                               |
| ⑨ S50000600              | Steel Case/Filter                   |
| ⑩ C03S50000              | Filter cotton                       |
| ⑪ W-DMXR                 | Wireless Receiver                   |
| ⑫ S50000501-ATR1         | Steel Case                          |
| ⑬ C04312600              | Power socket (Inlet)                |
| ⑭ S-500-PCBD5(DMX5P00A5) | P.C Board DMX 5Pin                  |
| ⑮ S-500-PCBD3(DMX3P00AB) | P.C Board DMX 3Pin                  |
| ⑯ C02013500              | Handle                              |
| ⑰ S-500-PCB              | Main P.C Board                      |
| ⑱ S-500-PCBC             | LCD Board                           |
| ⑲ C04000100              | Rocker Switch/Power Breaker         |
| ⑳ C04101200              | Breaker                             |
| ㉑ S-500-TKC(TKCBA50AA)   | Tank's Cap(Group)                   |
| ㉒ S-500-TK(TK1420020)    | Tank                                |
| ㉓ FS-500L                | Flight Case                         |
| ㉔ S-500-N                | Nozzle Body(Group)                  |
| ㉕ S-500-HB               | Hanging Bracket(Group)              |
| ㉖ W-DMX-PCB              | WDMX-Board                          |
| ㉗ SC-3                   | Wired Remote Controller             |
| ㉘ S-500-PC(PCAO162M1)    | Power Cord & Plug                   |
| ㉙ S-500-HOSE             | 10 Meters Standard Hose             |
| ㉚ ST-10                  | 10 Meters Extension Hose            |
| ㉛ C02014912              | Silicon Tube(dimensions: 6 x 3.3mm) |
| ㉜ PM-1                   | Pan Motor for S-500                 |